



The Montford

Three bedrooms • Detached • Integral single garage
 Three bathrooms • Bedrooms 1 and 2 with ensuite

Room dimensions:†

Ground Floor

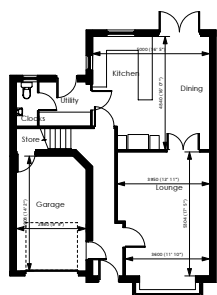
Lounge: 5.304m (17'5") x 3.950m (12'11") (max)
 Dining Kitchen: 5.000m (16'5") x 4.840m (16'0") (max)
 Garage: 4.808m (14'2") x 2.980m (9'9")
 Plus Utility, Cloaks and Store

First Floor

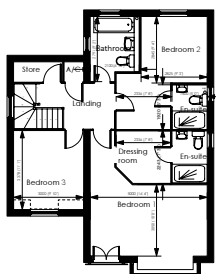
Bed 1 5.000m (16'4") x 3.080m (10'0")
 Dressing Area 2.336m (7'8") x 2.243m (7'3") Plus En-suite
 Bed 2 2.845m (9'4") x 2.825m (9'3") Plus Ent and En-suite
 Bed 3 3.378m (11'1") x 3.000m (9'10")
 Bathroom 2.791m (9'2") x 2.100m (6'10")

This 3 bed detached house has an integral single garage with internal access, lounge leading through to dining/kitchen a choice of units from our options range with built in appliances, hob, oven and dishwasher.

From the kitchen is the benefit of a utility and w.c. The 1st floor consists of 3 bedrooms and 3 bathrooms, bedrooms 1 & 2 both with en-suite and double fitted wardrobes. This house type subject to build stage will have the option for a conservatory to the rear.



Ground Floor



First Floor

† Whilst every endeavour has been made to ensure all room sizes shown in this brochure are accurate, we cannot take any responsibility for any errors.

